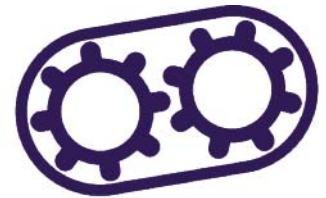


Ragno Spider TSJ 34/C

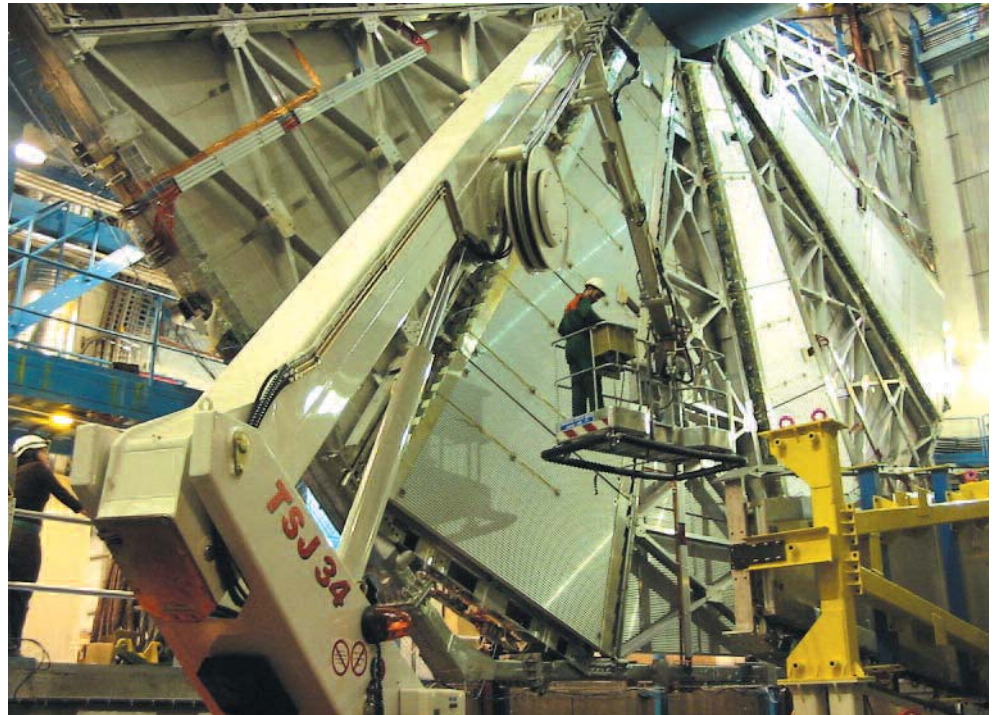
Crawler Version



trackedaccess

Features:

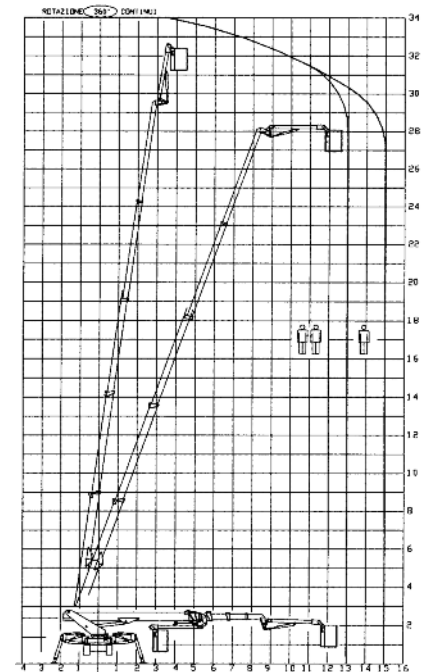
- **Non-marking rubber tracks** for use inside & out. Equally at home inside on a marble floor or across a muddy field or construction site.
- **Removable cage and compact dimensions** allows machine to fit through the narrowest entrances.
- **Great manoeuvrability** - can turn on the spot by reversing crawler drive.
- **Dual safe working load; One man 120kg and two man 200kg cage capacity** for extra versatility.
- **Bi-Energy** - Diesel engine for external work and 230VAC electric motor for internal or silent use. Can also be supplied with a DC battery power-pack.
- **Quick & easy to operate** with platform & remote control ground control boxes.
- **Low weight and minimal point loads** allows the machine to be used on sensitive flooring or lawns.
- **Very flexible** due to jib and rotating cage and variable jack positions; Allows access to awkward areas.



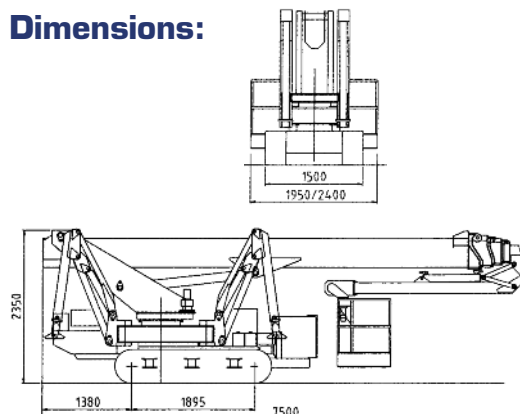
Specification:

Diesel Engine	20kW
Electric Motor	230V - 2.3kW
Maximum Slope	35%
Maximum Speed	2kmh
Turntable Slewing	360° Continuous
Aerial Cage	2.4 x 0.8m
Cage Rotation	80° + 80°
Safe Work Load	200kgs
Weight	6200kgs

Working Envelope:



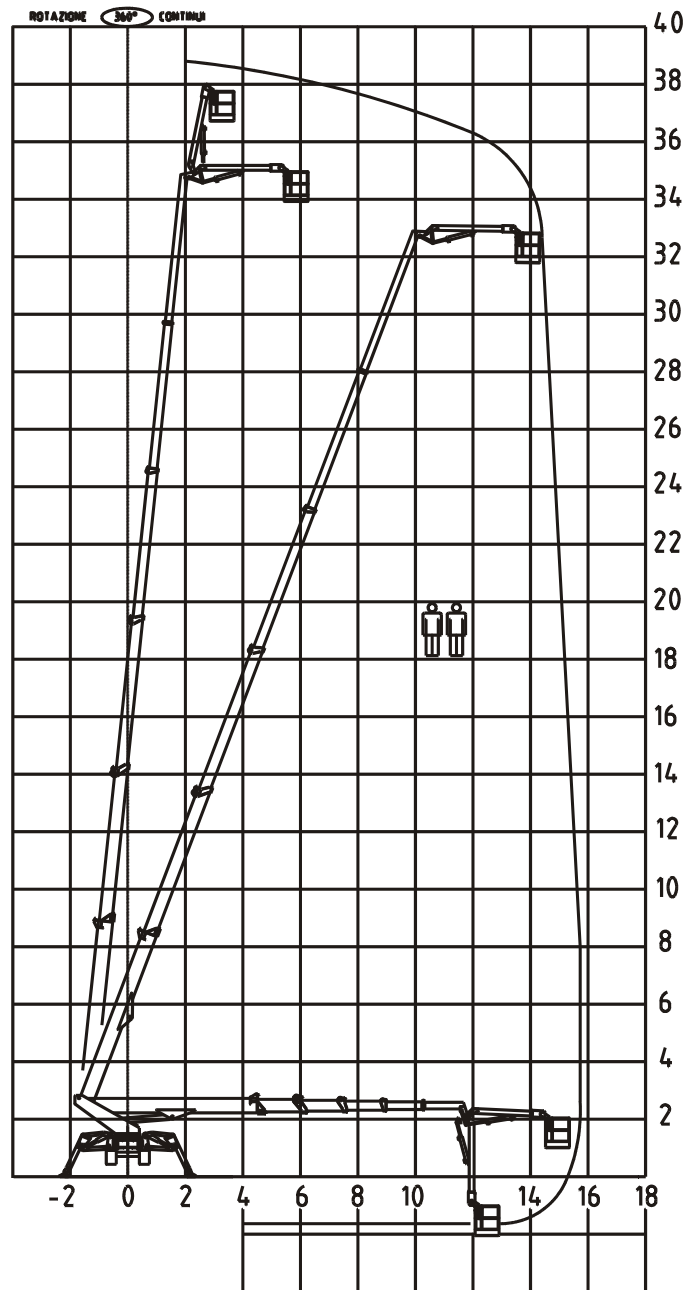
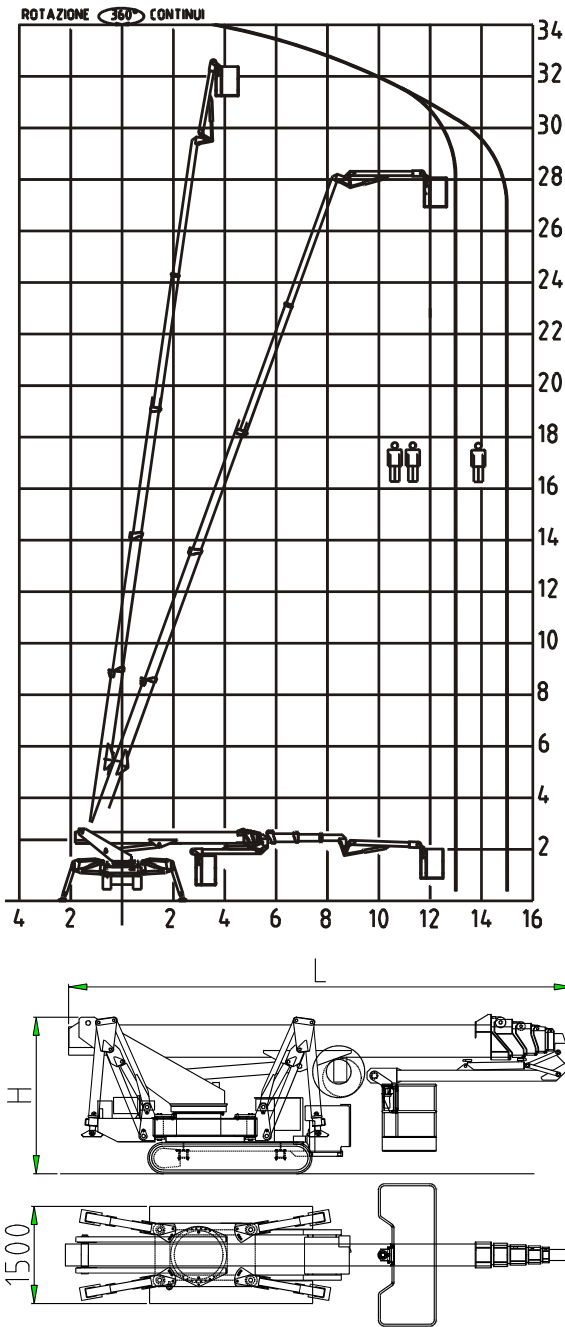
Dimensions:



All data is for guidance only and is subject to change without prior notice.

For more information call: 0845 603 5360 or e-mail: info@trackedaccess.com

www.trackedaccess.com



RAGNO TSJ 34/C	MODEL	RAGNO TSJ 39/C
182 X 28 CMS \ 0,63 KG/CM2	RUBBER TRACKS : SURFACE AND PRESSURE ON THE GROUND	204 X 28 CMS \ 0,76 KG/CM2
2 KM/H - 35%	MAX SPEED - GRADEABILITY	2 KM/H - 35%
360° CONTINUOUS	TURRET ROTATION	360° CONTINUOUS
CAGE ROTATION 80+80°	INTERCHANGEABLE CAGES CM 240 X 90 MAX. SIZES	CAGE ROTATION 80+80°
S.W.L. 200 \ 120 KGS	AREA MANAGEMENT SYSTEM	S.W.L. 200 \ 120 KGS
3.450 X 4.670 MMS.	VARIABLE GEOMETRY STABILIZATION SYSTEM WITH MIN. ENCUMBRANCE	4.030 X 5.580 MMS
20 kW	DIESEL ENGINE	20 kW
220V-2,2KW	ELECTRIC MOTOR(S)	220V-2,2KW + 380V-5KW
6.500 KGS	WEIGHT	7.800 KGS
2.350 MMS	STOWED HEIGHT (WITHOUT CAGE)	2.420 MMS
7.500 MMS	STOWED LENGTH	7.750 MMS
1.500 MMS	STOWED WIDTH (WITHOUT CAGE)	1.500 MMS

Tracked Access Limited

Powered Access & Lifting Specialists
 Tel 0845 603 5360 - Fax 0845 603 5361
 mail: info@trackedaccess.com
 url: www.trackedaccess.com

TECHNICAL DATA ARE INFORMATIVE ONLY AND CAN CHANGE WITHOUT NOTICE